

# GVM / OpenVAS

GVM (Greenbone Vulnerability Management) / OpenVAS (Open Vulnerability Assessment Scanner)

- [Kali Linux](#) [GVM / OpenVAS](#)

# Kali Linux GVM / OpenVAS

GVM (Greenbone Vulnerability Management) / OpenVAS (Open Vulnerability Assessment Scanner)



<https://greenbone.github.io/docs/latest/22.4/kali/index.html>



```
(kali@kali)-[~]
└─$ neofetch
.....
      ,;:ccc,.
      .....';lxO.
.....'''''''''';ld;
      ';;:;;,,-X,
      ..''''
      0Xxoc;,. ...
.....
      ,ONkc;,,cokOdc',.
      OMo          ':ddo.
      dMc          :00;
      0M.          .:o.
      ;Wd
      ;XO,
      ,d00dlc;,. ..
      ..';;cd00d::,.
      ..d;.';;.
      'd, .'
      ;l ..
      .o
      .c
      .:
      .

kali@kali
OS: Kali GNU/Linux Rolling x86_64
Host: VMware Virtual Platform None
Kernel: 6.8.11-amd64
Uptime: 53 mins
Packages: 3252 (dpkg)
Shell: zsh 5.9
Resolution: 1632x920
DE: Plasma 5.27.10
WM: kwin
Theme: [Plasma], Breeze [GTK2/3]
Icons: [Plasma], Flat-Remix-Blue-Dark [GTK2/3]
Terminal: konsole
CPU: AMD Ryzen 9 6900HX with Radeon Graphics (4) @ 3.293GHz
GPU: 00:0f.0 VMware SVGA II Adapter
Memory: 1710MiB / 3913MiB

(kali@kali)-[~]
└─$
```





```
sudo apt-get update
sudo apt-get install gvm -y
```

```
(kali㉿kali)-[~]
└─$ sudo apt-get update
已有:1 http://http.kali.org/kali kali-rolling InRelease
正在讀取套件清單 ... 完成

(kali㉿kali)-[~]
└─$ sudo apt-get install gvm
正在讀取套件清單 ... 完成
正在重建相依關係 ... 完成
正在讀取狀態資料 ... 完成
下列的額外套件將被安裝:
greenbone-security-assistant gsad gvm-gvm-tools libmicrohttpd12t64
下列【新】套件將會被安裝:
greenbone-security-assistant gsad gvm gvm-gvm-tools libmicrohttpd12t64
升級 0 個，新安裝 5 個，移除 0 個，有 0 個未被升級。
需要下載 5,154 kB 的套件檔。
此操作完成之後，會多佔用 20.9 MB 的磁碟空間。
是否繼續進行 [Y/n]? [Y/n] y
```

gvm-setup admin

sudo gvm-setup

```
(kali㉿kali)-[~]
└─$ sudo gvm-setup
[sudo] kali 的密碼:

[>] Starting PostgreSQL service
[>] Creating GVM's certificate files
[>] Creating PostgreSQL database
[*] Creating database user
[*] Creating database
[*] Creating permissions
CREATE ROLE
[*] Applying permissions
GRANT ROLE
[*] Creating extension uuid-osspl
CREATE EXTENSION
[*] Creating extension pgcrypto
CREATE EXTENSION
[*] Creating extension pg-gvm
CREATE EXTENSION
[>] Migrating database
[>] Checking for GVM admin user
[*] Creating user admin for gvm
[*] Please note the generated admin password
[*] User created with password '87874188-b377-4243-a2d8-66975730fcb5'.
[*] Configure Feed Import Owner
[*] Define Feed Import Owner
[*] Update GVM feeds
Running as root. Switching to user '_gvm' and group '_gvm'.
Trying to acquire lock on /var/lib/openvas/feed-update.lock
Acquired lock on /var/lib/openvas/feed-update.lock
: Downloading Notus files from rsync://feed.community.greenbone.net/community/vulnerability-feed/22.04/vt-data/notus/ to /var/lib/notus
```

```
Running as root. Switching to user '_gvm' and group '_gvm'.
Trying to acquire lock on /var/lib/opensvas/feed-update.lock
Acquired lock on /var/lib/opensvas/feed-update.lock
! Downloading Notus files from rsync://feed.community.greenbone.net/community/vulnerability-feed/22.04/vt-data/notus/ to /var/lib/notus
! Downloading NASL files from rsync://feed.community.greenbone.net/community/vulnerability-feed/22.04/vt-data/nasl/ to /var/lib/opensvas/plugins
Releasing lock on /var/lib/opensvas/feed-update.lock

Trying to acquire lock on /var/lib/gvm/feed-update.lock
Acquired lock on /var/lib/gvm/feed-update.lock
! Downloading SCAP data from rsync://feed.community.greenbone.net/community/vulnerability-feed/22.04/scap-data/ to /var/lib/gvm/scap-data
! Downloading CERT-Bund data from rsync://feed.community.greenbone.net/community/vulnerability-feed/22.04/cert-data/ to /var/lib/gvm/cert-data
! Downloading gvm data from rsync://feed.community.greenbone.net/community/data-feed/22.04/ to /var/lib/gvm/data-objects/gvmd/22.04
Releasing lock on /var/lib/gvm/feed-update.lock

[*] Checking Default scanner
[*] Modifying Default Scanner
Scanner modified.

[+] Done
[*] Please note the password for the admin user
[*] User created with password '87874188-b377-4243-a2d8-66975730fcb5'.

[>] You can now run gvm-check-setup to make sure everything is correctly configured

(kali@kali)-[~]
└─$
```

■■■■■ok

```
sudo gvm-check-setup
```

```
It seems like your GVM-23.11.0 installation is OK.

(kali@kali)-[~]
└─$
```

■■■■■■■gvm

```
sudo gvm-stop
```

■■GVM■■■■■■■■■■

```
sudo vim /usr/lib/systemd/system/greenbone-security-assistant.service
```

```
(kali@kali)-[~/etc/default]
└─$ sudo vim /usr/lib/systemd/system/greenbone-security-assistant.service
```

■ --listen 127.0.0.1 ■■ 0.0.0.0■■■■■■■

```
[Unit]
Description=Greenbone Security Assistant daemon (gsad)
Documentation=man:gsad(8) https://www.greenbone.net
After=network.target gvmd.service
Wants=gvmd.service
■

[Service]
Type=exec
User=_gvm
Group=_gvm
RuntimeDirectory=gsad
RuntimeDirectoryMode=2775
PIDFile=/run/gsad/gsad.pid
ExecStart=/usr/sbin/gsad --foreground --listen 0.0.0.0 127.0.0.1 --port 9392
Restart=always
TimeoutStopSec=10

[Install]
WantedBy=multi-user.target
Alias=greenbone-security-assistant.service
~
~
```

## ■ ■ gvm

```
sudo gvm-start
```

```
(kali㉿kali)-[~]
└─$ sudo gvm-start
[>] Please wait for the GVM services to start.
[>]
[>] You might need to refresh your browser once it opens.
[>]
[>] Web UI (Greenbone Security Assistant): https://127.0.0.1:9392
```

□ https:// << IP Address >>:9392 □□□□admin□□□□□□



# Greenbone

## Sign in to your account

Username  
admin

---

Password  
.....|

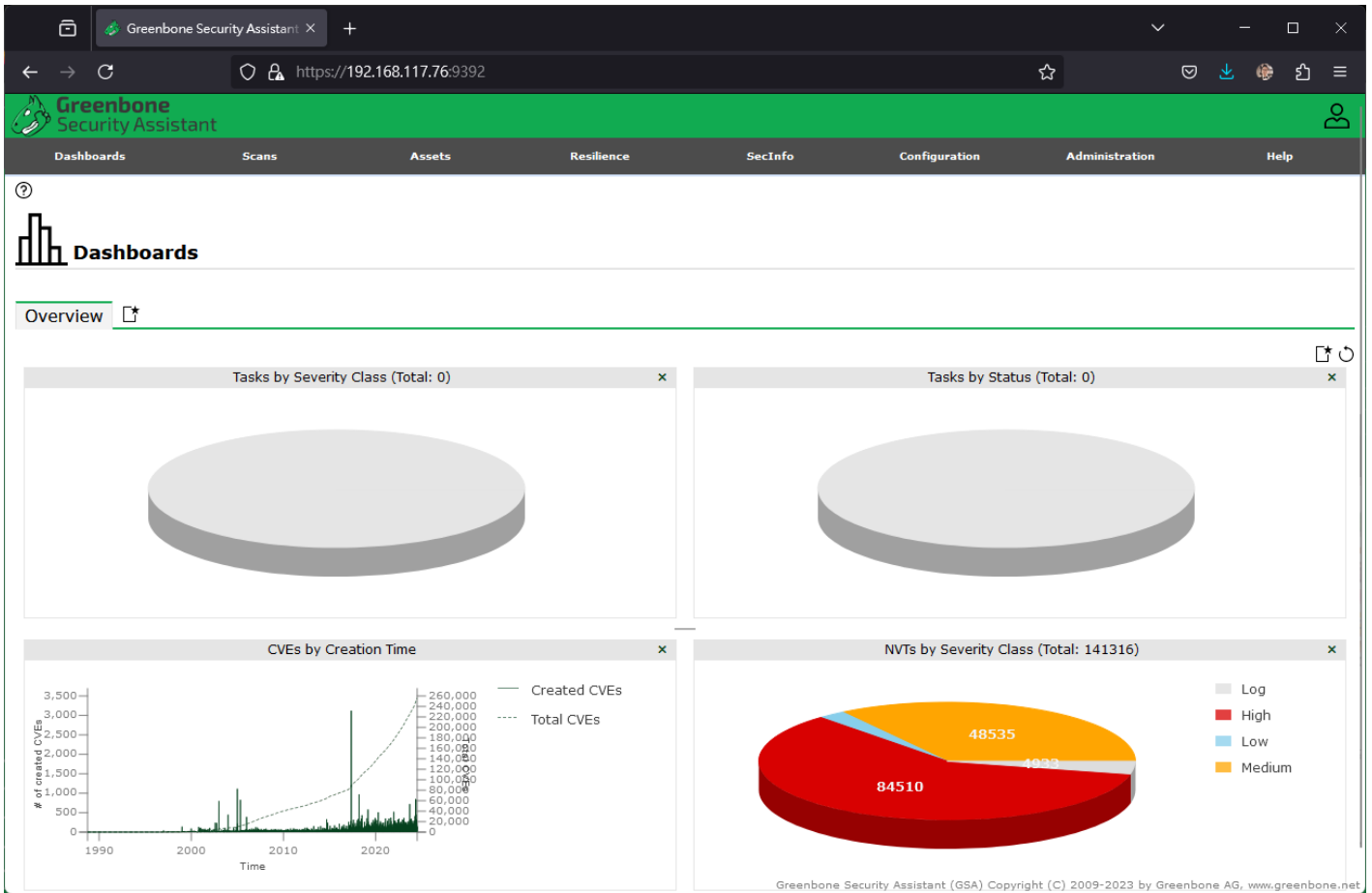
Sign In



admin

```
sudo -u _gvm gvmc --user=admin --new-password='new_password'
```

```
(kali@kali)~$ sudo -u _gvm gvmc --user=admin --new-password=  
(kali@kali)~$
```



Administration => Feed Status

The Administration - Feed Status page displays the following table:

Type	Content	Origin	Version	Status
NVT	NVTs		T	Current
SCAP	CVEs  CPEs	Greenbone SCAP Data Feed	20240705T0500	3 days old
CERT	CERT-Bund Advisories  DFN-CERT Advisories	Greenbone CERT Data Feed	20240705T0408	3 days old
GVM_DATA	Compliance  Port Lists  Report Formats  Scan Configs	Greenbone Data Objects Feed	20240705T0504	3 days old

The right-hand navigation menu includes: Users, Groups, Roles, Permissions, Performance, Trashcan, **Feed Status** (highlighted), LDAP, and RADIUS.

Greenbone Security Assistant (GSA) Copyright (C) 2009-2023 by Greenbone AG, www.greenbone.net

# Feed

Feed gvm-start Feed

```
sudo greenbone-feed-sync
```

```
(kali㉿kali)-[~/etc/default]
└─$ sudo greenbone-feed-sync
Running as root. Switching to user '_gvm' and group '_gvm'.
Trying to acquire lock on /var/lib/openvas/feed-update.lock
Acquired lock on /var/lib/openvas/feed-update.lock
⌘ Downloading Notus files from
rsync://feed.community.greenbone.net/community/vulnerability-feed/22.04/vt-data/notus/ to /var/lib/notus
⌘ Downloading NASL files from rsync://feed.community.greenbone.net/community/vulnerability-feed/22.04/vt-data/nasl/ to /var/lib/openvas/plugins
Releasing lock on /var/lib/openvas/feed-update.lock

Trying to acquire lock on /var/lib/gvm/feed-update.lock
Acquired lock on /var/lib/gvm/feed-update.lock
⌘ Downloading SCAP data from rsync://feed.community.greenbone.net/community/vulnerability-feed/22.04/scap-data/ to /var/lib/gvm/scap-data
⌘ Downloading CERT-Bund data from rsync://feed.community.greenbone.net/community/vulnerability-feed/22.04/cert-data/ to /var/lib/gvm/cert-data
⌘ Downloading gvm data from rsync://feed.community.greenbone.net/community/data-feed/22.04/ to /var/lib/gvm/data-objects/gvmd/22.04
Releasing lock on /var/lib/gvm/feed-update.lock

(kali㉿kali)-[~/etc/default]
└─$
```